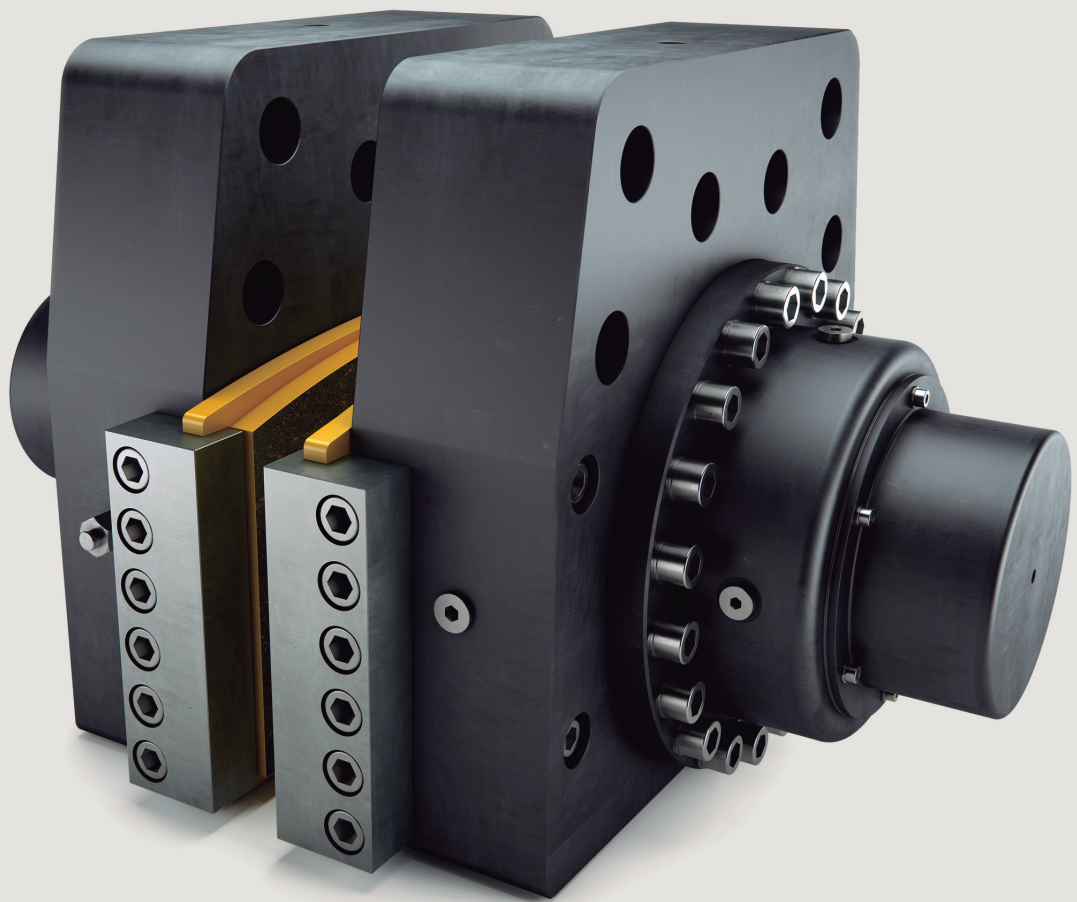
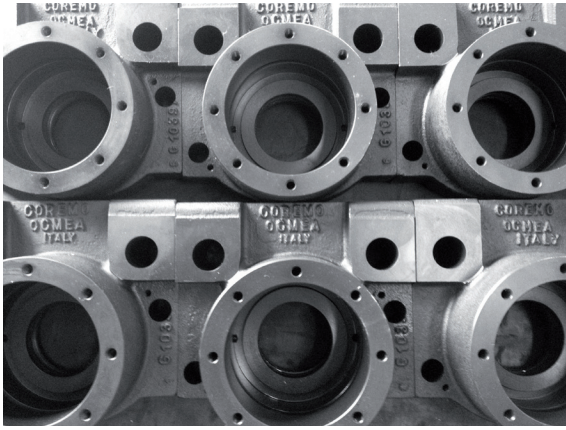


Hydraulic Brakes





Coremo's strong points have always lain in its precise, tailor-made design, constant product innovation and quality of components.

Coremo Ocmea draws on its long tradition in the manufacture of brakes and clutches for industrial, marine, oil & gas, energy and entertainment sector applications to look firmly to the future, to the realisation of services with a high degree of customisation: structured projects including products, technical support, maintenance and consulting.

Design Services

Coremo's goal is to design and provide a braking solution, suitable for specific applications, through a brake selection process characterized by continuous *R&D, cost optimisation, customisation and FEM analysis.*

Products

A wide range of brakes and accessories verified by both internal and external tests in order to guarantee their quality control. *Hydraulic brakes, pneumatic brakes, multi discs brakes, water-cooled brakes, air-cooled brakes, customized brakes, clutches, hydraulic power units, discs, couplings, accessories, certification.*

Supply Chain Services

A large network of Agents and Distributors and an internal sales support allow us to reach the customer's needs and provide flexible service worldwide. *Quick reaction, safety stock, short delivery terms, customized labeling.*

After Sales Support

Any help, question or special need after buying our products, are welcome and held in high consideration by our specialists. *Technical support, dedicated training, spare parts availability, product reconditioning.*



Coremo hydraulic brakes are designed to provide a simple, fast solution to the safety requirements of a wide range of industrial applications

Coremo´s Brakes Features

Hydraulic Thruster Caliper Brakes

Oil applied and Spring applied

The certified, tested and inspected SG iron levers are designed to withstand the stresses during dynamic braking, while the steel thruster is calculated to support pressures of over 100 [bar]. The lining pads are produced using friction materials compliant with the relevant European standards on safety and toxic substances.

Our brakes can be supplied complete with wear indicator and ON/OFF switch. Operating temperature can vary from -20 [°C] to +200 [°C].

Direct Hydraulic Brakes

Oil applied and Spring applied

Brake bodies - in cast iron or steel - are designed to withstand high pressures and prevent oil leakages. The brake operating temperature varies from -20 [°C] to +200 [°C]; solutions for -40 [°C] are also available. ID direct Hydraulic brakes are always supplied with wear indicator. Inductive ON/OFF positioning sensor can be mounted upon request.

The steel and the SG iron bodies are certified, tested and inspected. ID brakes are designed to withstand the stress generated during dynamic braking, while the steel bodies are calculated to support pressures of over 200 [bar].

Hydraulic Power Packs



Coremo´s hydraulic power packs are engineered to complete the braking system and make it more efficient, safe and suitable for the specific application. All power units have redundant return valves, oil temperature control system and hand operated system to be used in case of power failure. The units are available for both oil-applied and spring-applied hydraulic brakes.

The size of the tank, the pump and the motor are chosen according to the type and quantity of brakes to be powered.

Distances, braking time, reaction time, piping, unit positioning, temperature and certifications are other input data needed to size the correct power pack.

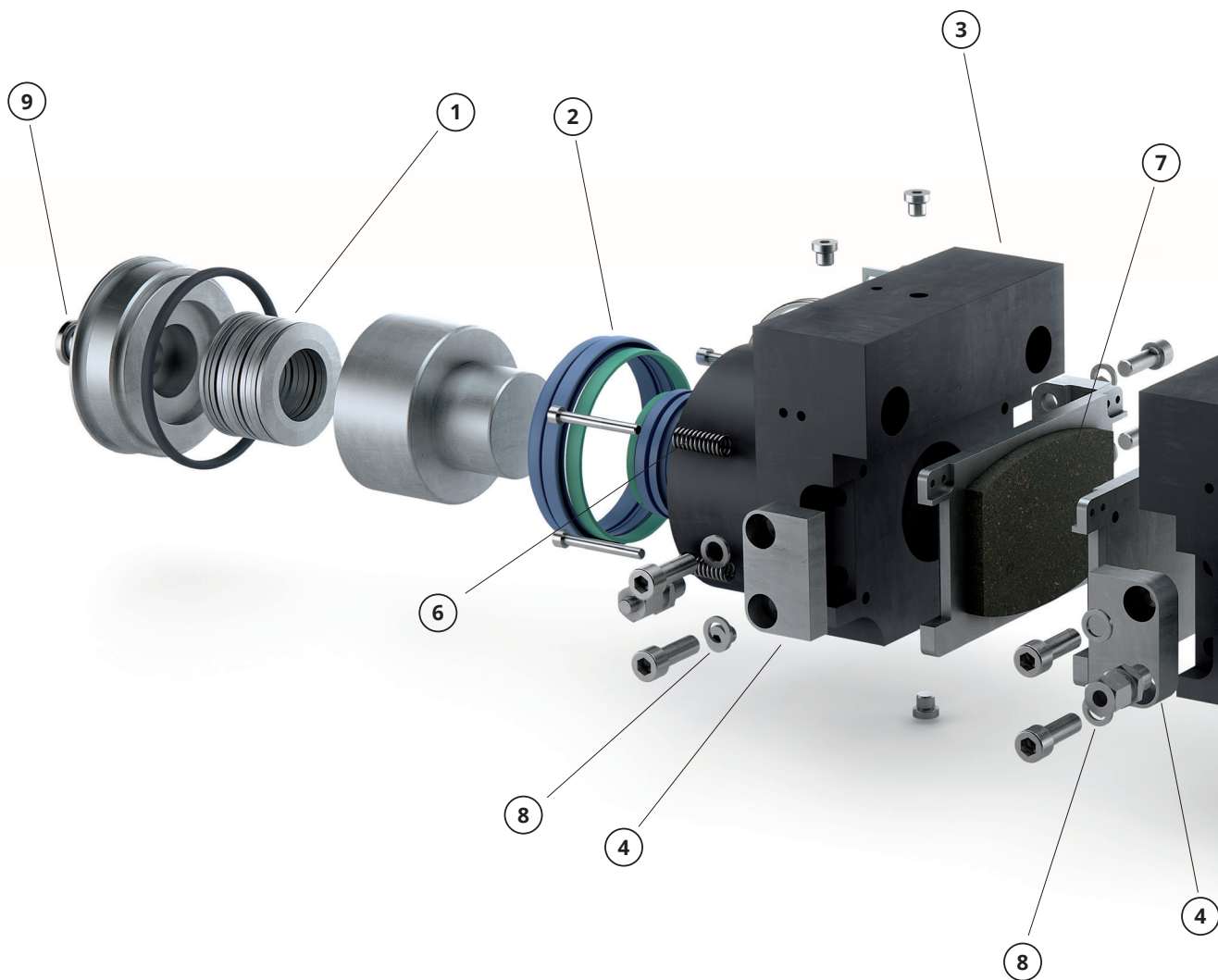
Hydraulic Brakes

Our Hydraulic brakes can cover a clamping force range from 10.000N to 750.000N.

Special treatments and paintings are available in order to meet specific customer standards or any environmental condition. On off-shore application our brakes are supplied on C5-M corrosion protection class in order to reduce maintenance and lifecycle costs.

Special attention is paid to the selection and combination of different class materials and their treatments in order to minimize the electrolytic effect, which can produce unexpected oxidation while working in salt-water environment.

Special steel and treatments are used in applications at low temperatures, -40 [°C].



① Spring pack
Cup springs pack designed for 2MLN cycles.

② Seals
First class seals for high pressure use and wide working temperature range.

③ Body
Steel body.

④ Lateral guides
Steel made. Designed to support lateral forces and preserve the seals.

⑤ ON / OFF
Inox inductive switch.

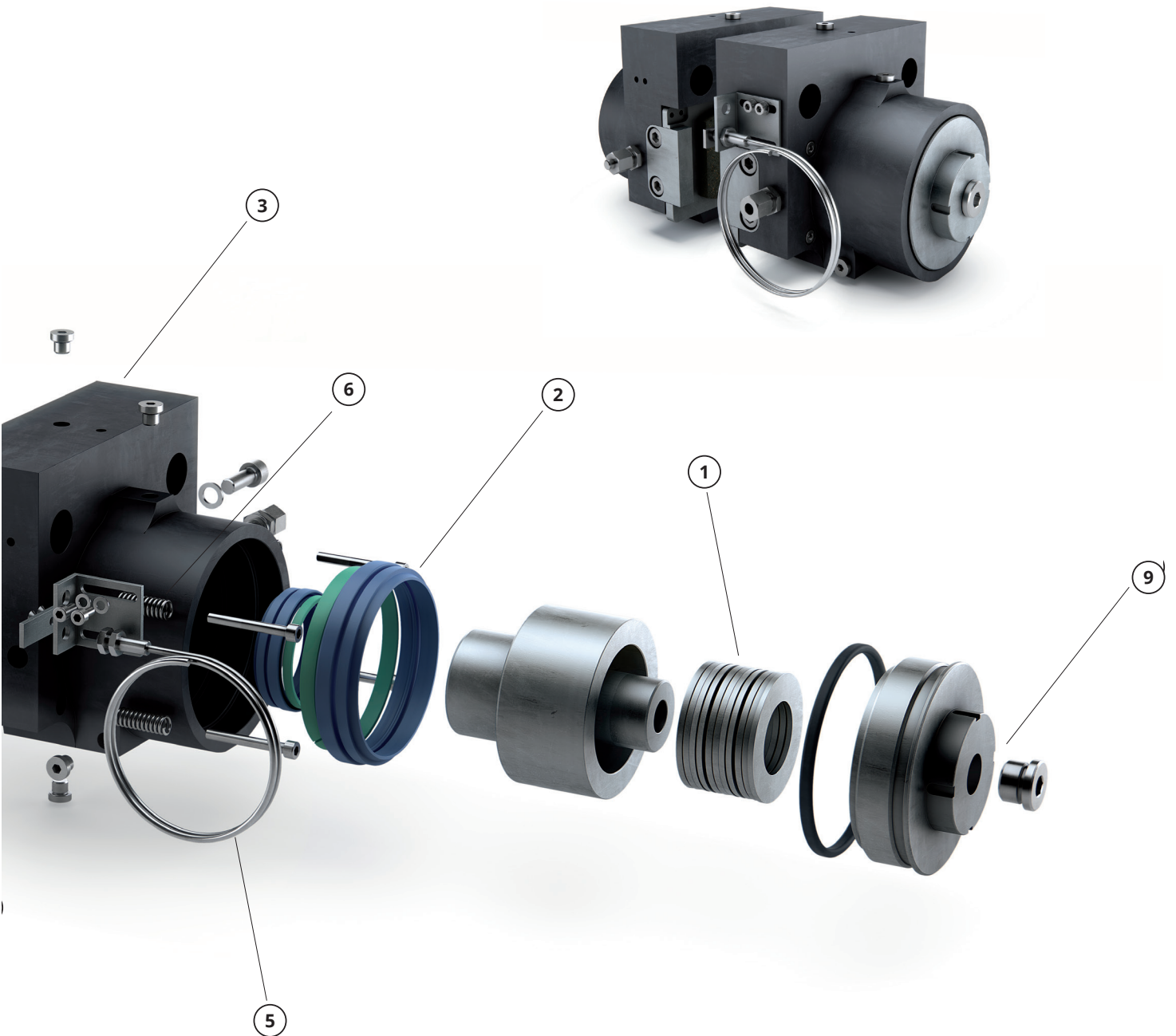
⑥ Return spring system
To ensure the pads/disc disengagement.

⑦ Pads
Self-aligning pads to reduce the break-in time.

⑧ Washers
Anti-vibration approved washers.

⑨ Wear compensation system
New design, easy to handle.

All materials, painting and treatments of the brake parts and its components have been chosen to resist in salt-water environments (Full Offshore Protection) and minimize the electrolytic effect which produce unexpected oxidation.



Clamping force: from 10.000N to 750.000N

Hydraulic Caliper Brakes
Oil Applied

Hydraulic Caliper Brakes
Spring Applied

Direct Hydraulic Brakes
Oil Applied

Direct Hydraulic Brakes
Spring Applied



A3-ID



A3N-ID



ID800



ID800N



D3-ID



D2N-ID



ID900



ID900N



F3-ID



D3N-ID



ID1500



ID1500N



G3-ID



EL4N-ID



ID2000



ID2000N



F2N-ID



ID3000



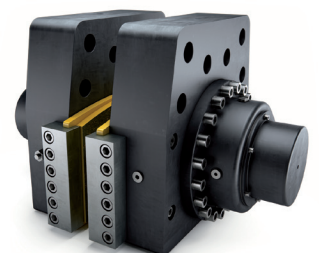
ID2500N



G3N-ID



ID3000N

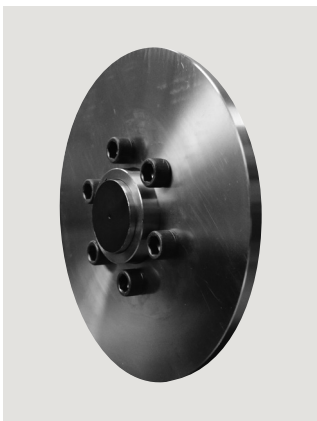


ID3005N



Other Products

Brake Discs



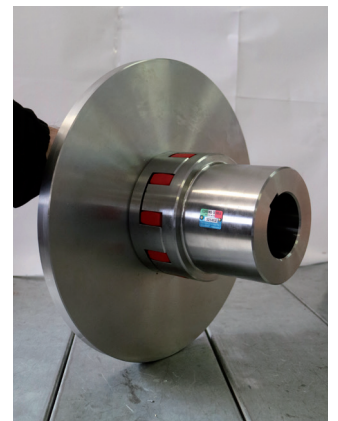
Coremo's products include a large range of standard or customized discs and mounting hubs. Flat steel discs, with or without hub, have been added to our offer of cast iron discs. Made in normalized steel (C40+N) or stainless solubilized steel (AISI 316L), these discs have been tested and approved to perform with our friction material pads. They are available from 250 to 600 mm diameter and 12.7 / 25.5 mm thickness with surface hardness from 190-220 HB and roughness 1.6 μm . Customized discs can also be offered.

Spare Parts



Coremo maintains a safety stock which guarantees a fast reaction in case of spare parts request: brake linings, pistons, sensors, and seals are promptly available to avoid any downtime to our customers.

Shaft Couplings



In order to offer a complete solution to customers, Coremo can now supply a wide range of shaft couplings thanks to a new valued partnership. Gear, Flexible, Steel lamina and Flanged couplings are available with or without disc.

Coremo Ocmea S.p.A.

Via G. Galilei 12
20090 Assago (MI)
T + 39 02 4880697
F + 39 02 4881940

info@coremo.it

Coremo France

12 av. des Prés
78180 Montigny le Bretonneux - France
T +33 01 48 94 76 72
F +33 01 48 94 13 51

contact@coremo.fr

www.coremo.com



ISO 9001 - 2008
Cert. n. 0238